

## COVID-19 GUIDEDLINES FOR SCHOOL LEARNING JOURNEY TO MALAY HERITAGE CENTRE January 2021 onwards

**Before you book your learning journeys to the Malay Heritage Centre (MHC), please take note of the following:**

### Booking of Visits

1. Time slots allocated exclusively for school visits to MHC are available as follow.

Day of the week	Time Slots Available
<ul style="list-style-type: none"> <li>• 2<sup>nd</sup> &amp; 4<sup>th</sup> Mondays of Jan, Feb &amp; Mar 2021</li> </ul>	<ul style="list-style-type: none"> <li>• 9am – 10am</li> <li>• 11am – 12pm</li> </ul>
<ul style="list-style-type: none"> <li>• Tuesdays – Fridays</li> </ul>	<ul style="list-style-type: none"> <li>• 9am – 10am</li> </ul>

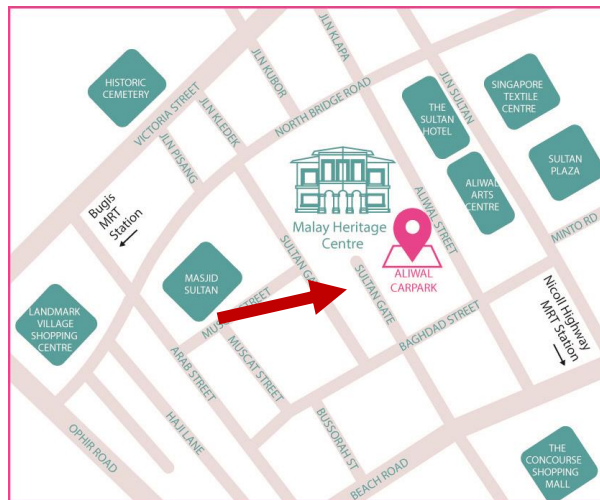
2. Only free and easy self-guided visit to the Malay Heritage Centre is available now. For a list of our self-guided resources to complement your visit, please visit the following:
  - a. [Resources and Activities for Students & Teachers](#)
  - b. [Curators' Tour of MHC Permanent Galleries](#)
  - c. [MHC's YouTube Channel](#)
3. Please submit your booking form at least four (4) weeks in advance. A confirmation email will be sent to you when your visit is confirmed.

### Capacity

4. Each slot will be reserved exclusively for use by one (1) school and for one (1) type of visit.
5. Schools can bring a class of up to fifty (50) people (inclusive of students and adults supporting them in their learning) per slot.
6. In accordance with MOE's guidelines, teachers are to note that all activities must maintain a one (1) metre safe distancing measure and be reconfigured to multiple groups of eight (8) with one (1) metre between groups.

## Pre-visit Preparation

- All participants are required to check-in and check-out via SafeEntry. Hence, students must bring their ez-link student pass for scanning or be able to recite their own NRIC number at MHC.
- MHC's Permanent Exhibition is a shoes-off area. Teachers must conduct necessary briefings on museum etiquette, mask-wearing and hygiene practices. Students should also be split into groups of eight (8) prior to the visit to the museum.
- Teachers are encouraged to visit the Malay Heritage Centre ahead of your learning journey to familiarise with the space and safe distancing measures. You may also wish to attend the regular guided tours to learn more about the narrative of our exhibitions.
- The pick-up and drop-off point will be at Sultan Gate entrance. Please ensure that the driver has been briefed beforehand. Please be prepared for wet weather as there is no shelter from the museum to the drop-off point.



- Students are strongly encouraged to bring only a small lightweight bag to contain essentials like their stationery and water bottle. Please note that the water coolers at the museum will not be available for use.

## On the day of the Visit

1. Students and teachers must have their temperatures taken prior to the museum visit. Students/teachers who are unwell (i.e. temperature higher than 37.5 °C) should not visit the museum and are encouraged to seek immediate medical attention.
2. Teachers must submit a copy of the attendance list Visitor Service Staff upon arrival as a supporting document.
3. Teachers must group students in groups of eight (8) prior to the visit and conduct necessary briefings on museum etiquette, mask-wearing as well as hygiene practices a
4. Students are encouraged to go for a toilet break in school before travelling to the museum.
5. Teachers should identify students without ez-link student pass before leaving the school and ensure that they have their NRIC number for manual entry.

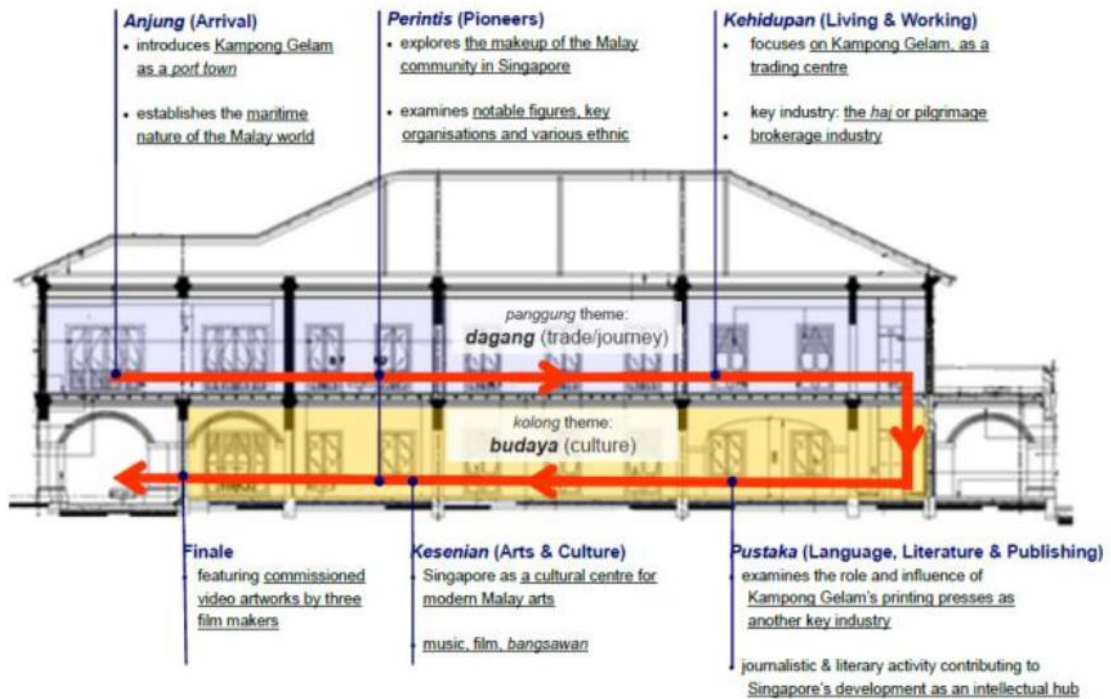
## Upon Arrival

1. Teachers and students will be required to have their temperature taken at the Temperature Screening and SafeEntry station when they reach the museum.
  - a. Check-in and check-out to be completed via SafeEntry for all accompanying adults and teachers.
  - b. Students should be prepared to scan their ez-link student pass for entry. If the students do not have their identification card, their NRIC number will be recorded manually.
  - c. Teachers must submit a copy of the attendance list to the Visitor Services staff as a supporting document for Safe Entry for students.
2. Those who are unwell with flu-like symptoms during or before the visit will be brought to a designated area by museum staff, and the teacher in-charge will be asked to inform the school and proceed according to school SOPs immediately.
3. Students must move around the museum in their pre-assigned groups of eight (8). They should remain in their groups and follow designated routes (for tours and programmes) to minimise contact with other visitors.
4. Teachers are required to make sure that students stay within their groups and maintain a one (1)-metre distance between groups while at the museum. To ensure safe distancing, teachers are advised to supervise their students' movement.
5. Teachers will also need to ensure that students keep their masks on and maintain good hygiene practices.

6. Students should be spread across the different galleries. Please refer to suggested routes below for the Permanent Exhibition.

## Tour Route

### Profile View

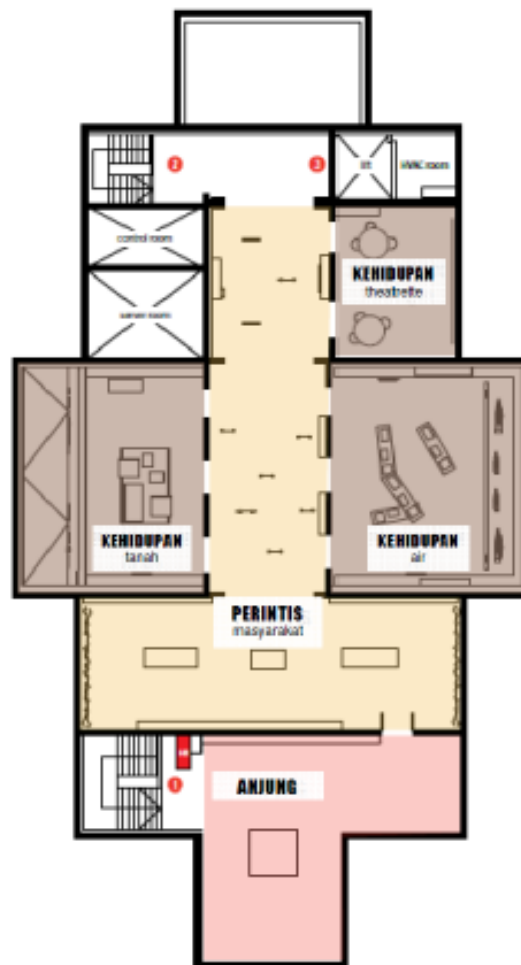


We recommend that you split the students into two (2) groups to explore level 1 and 2 separately before swapping over. i.e. Group A to visit Level 2 (as picture above) first before visiting level 1. Group B can explore level 1 before moving up to level 2.

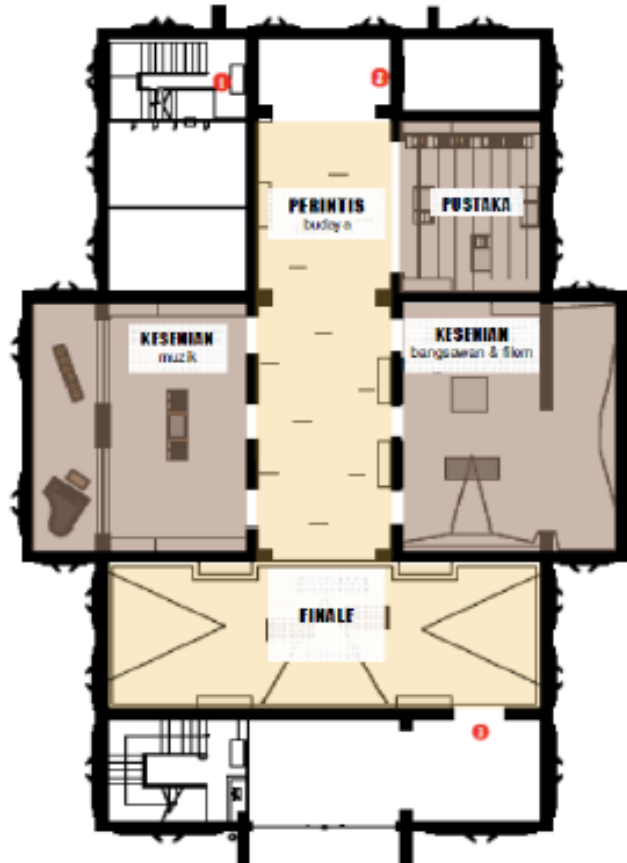
### Bird Eye's View

We recommend that the students enter in 10 minutes interval and explore different parts of the galleries to prevent intermingling of groups. Please see the floor plan below for planning purpose.

### Level 2

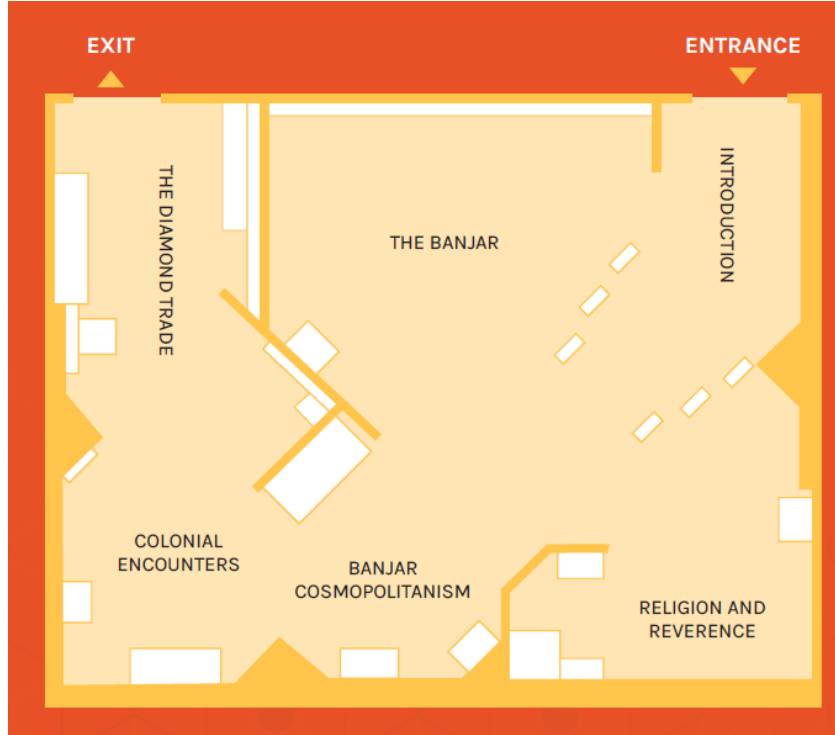


Level 1

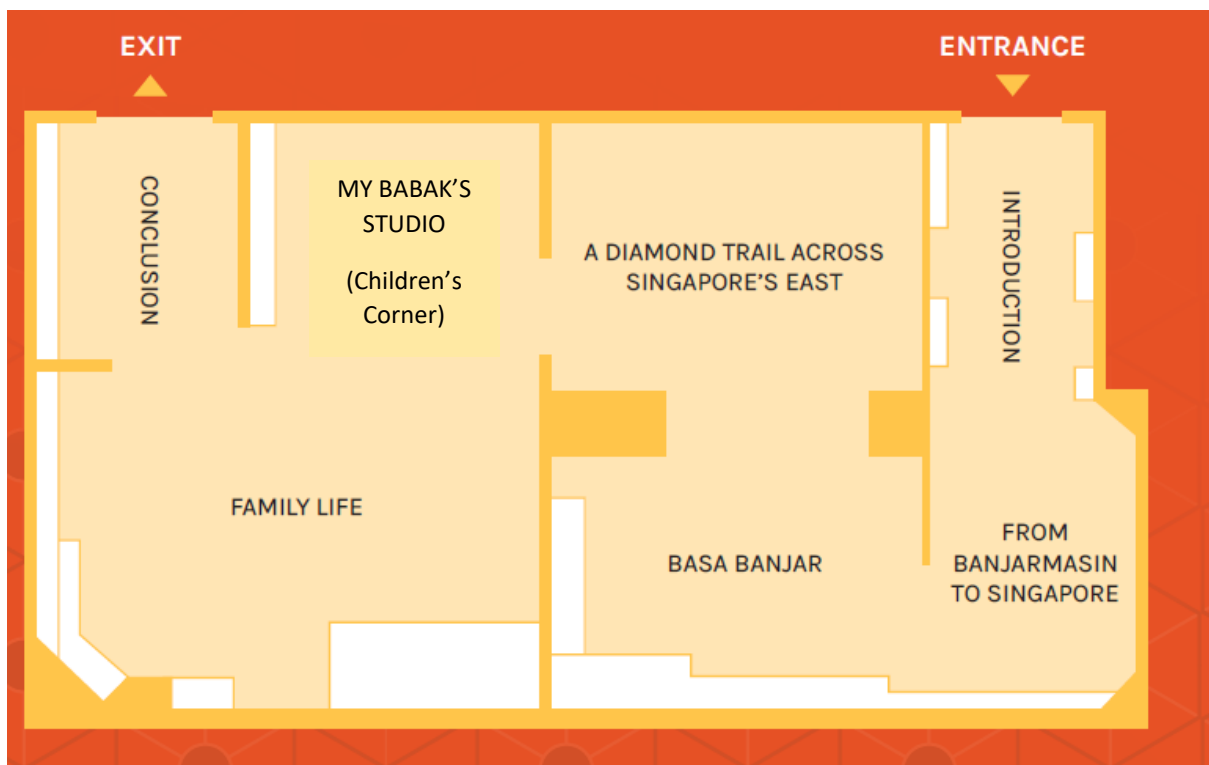


7. For visit to the special exhibition '[Urang Banjar: Heritage & Culture of the Banjar in Singapore](#)', we recommend that you split the students into two (2) groups to explore Gallery 1 and 2 separately before swapping over. i.e. Group A to visit Gallery 1 first before visiting Gallery 2. Group B can explore Gallery 2 before moving to Gallery 2. Please use the dedicated exit to prevent inter-mingling.
8. We recommend schools to purchase "[My Mini Briefcase](#)" to accompany your visit. Each "Briefcase" comes with a pair of disposable children-sized gloves, crayon, pencil, background information about "[My Babak's Studio](#)", instruction sheets for the relief rubbing activity as well as a sticker sheet to decorate the bag.

Gallery 1



Gallery 2



### **Safe Management Measures Undertaken by the Museum**

1. The museum has increased the frequency of cleaning and disinfection of our premises, especially high touch surfaces and items.
2. Hand sanitisers are available in accessible locations throughout the museum.